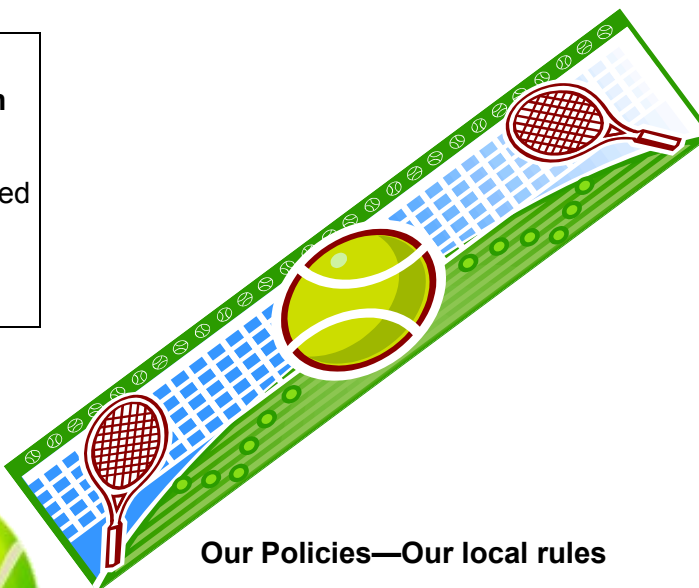
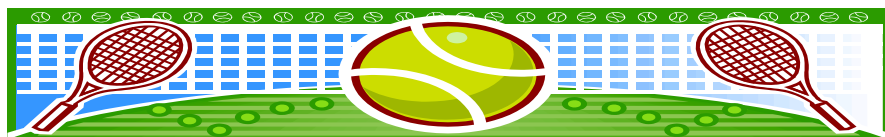


## The Legislation — the rules

<b>National Education Goals</b> Ten NEGs	<b>National Curriculum Statements</b> <ul style="list-style-type: none"> <li>New Zealand Curriculum</li> <li>Te Marautanga o Aotearoa</li> </ul>	<b>National Standards</b> <ul style="list-style-type: none"> <li>Reading</li> <li>Writing</li> <li>Mathematics</li> </ul> Ngā Whanaketanga Rumaki Māori	<b>National Administration Guidelines</b> Eight NAGs revised in 2012
---------------------------------------------	--------------------------------------------------------------------------------------------------------------------------------------------------	---------------------------------------------------------------------------------------------------------------------------------------------------------	-------------------------------------------------------------------------

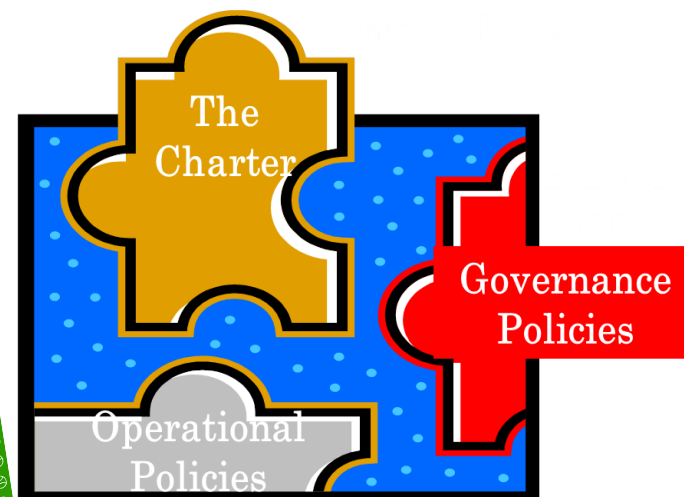
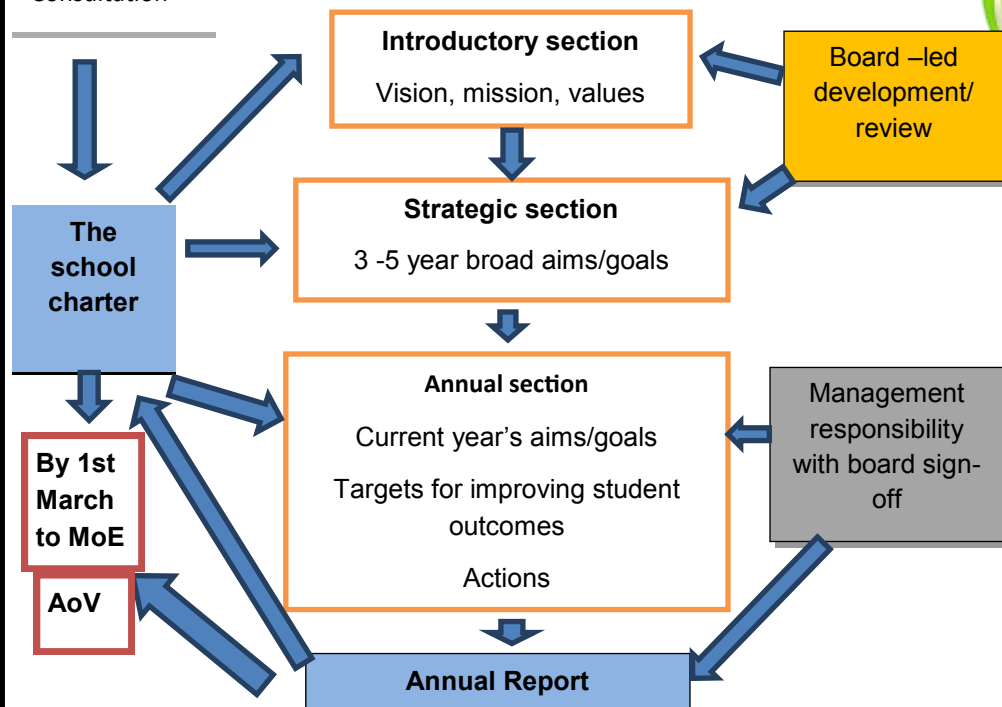


Our Policies—Our local rules

## The Charter—the aim of the game

Anyone 4 tennis?

Consultation



## Education Act 1989, Section 75 and 76, and Section 65



The legal responsibility of boards of trustees is determined by Section 75 of the Education Act 1989:

### **s.75 Functions and powers of boards**

- (1) A school's board must perform its functions and exercise its powers in such a way as to ensure that every student at the school is able to attain his or her highest possible standard in educational achievement.
- (2) Except to the extent that any enactment or the general law of New Zealand provides otherwise, a school's board has complete discretion to control the management of the school as it thinks fit.

*Section 75: replaced, on 13 June 2013, by [section 16](#) of the Education Amendment Act 2013 (2013 No 34).*

s.65 A board may from time to time, in accordance with the State Sector Act 1988, appoint, suspend, or dismiss staff.

The legal responsibility of principals is determined by Section 76 of the Education Act 1989:

### **s.76 Principals –**

- (1) A school's principal is the board's chief executive in relation to the school's control and management.
- (2) Except to the extent that any enactment or the general law of New Zealand provides otherwise, the principal –
  - (a) Shall comply with the board's general policy directions; and
  - (b) Subject to paragraph (a) of this subsection, has complete discretion to manage as the principal thinks fit the school's day to day administration.